

Dirac Road

ASHLEY DOWN

APPROXIMATE FLOOR AREA
93.5 SQM / 1007 SQFT



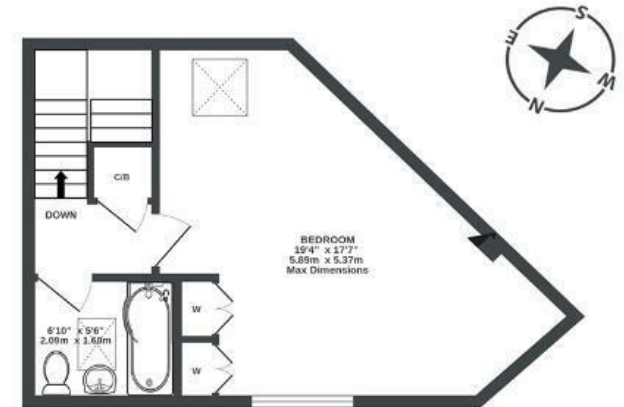
GROUND FLOOR
341 sq.ft. (31.7 sq.m.) approx.



1ST FLOOR
331 sq.ft. (30.8 sq.m.) approx.



2ND FLOOR
334 sq.ft. (31.0 sq.m.) approx.



Illustrations are for reference purposes only, measurements are approximate, not to scale.

Boardwalk

Dirac Road

ASHLEY DOWN, BRISTOL



£400,000



2 Bedrooms



BS7 9LP



2 Bathrooms

"Its a very cosy but quirky layout that works well. The interior is so versatile and there is enough outdoor space to be able to enjoy the sunshine. The location is amazing, with Ashley Down train station on your doorstep and being so close to Gloucester Road and St Andrews Park."

